

# KUNIA RESIDENTIAL PARTNERS

100 Kahelu Ave., 2<sup>nd</sup> Floor, Mililani, HI 96789  
Phone: (808) 548-4811 / Fax: (808) 548-6690

## Transmittal Letter

**Date:** April 27, 2001

**To:** Albi Mateo

**From:** Calvin Mann

Covenants Manager

Royal Kunia Community Association

**Re:** Royal Kunia Site 5A

**CC:**

FYI    For Review & Comment    As Requested    Please Handle

### Transmitting the following:

Copies	Date	Description
14	undated	SUPPLEMENT TO FENCE & WALL GUIDELINES SITE 5A GALLERY HOMES

### • Comments:

Please take a moment to review and comment on the attached Supplement to the Fence & Wall Guidelines for Royal Kunia Site 5A, The Gallery Homes. If I do not receive any comments back by Wednesday, May 9<sup>th</sup>, I'll assume that everything is okay. If you have any questions or concerns, please feel free to call me at (808) 548-2902.

*Setback from Road of any.  
lot 37 2'6" next to sidewalk for sightline easement  
gate wall 2'6" solid w/ wrought iron for security* Calvin Mann

SUPPLEMENT TO FENCE & WALL GUIDELINES  
ROYAL KUNIA SITE 5A

ALL LOTS:

For lots with existing 5' fence(s) within or abutting their rear property line(s), any walls or fencing meeting that existing 5' fence shall be the same height as that existing 5' fence at the point of contact for a minimum of 5' from that existing 5' fence.

SPECIAL LOTS:

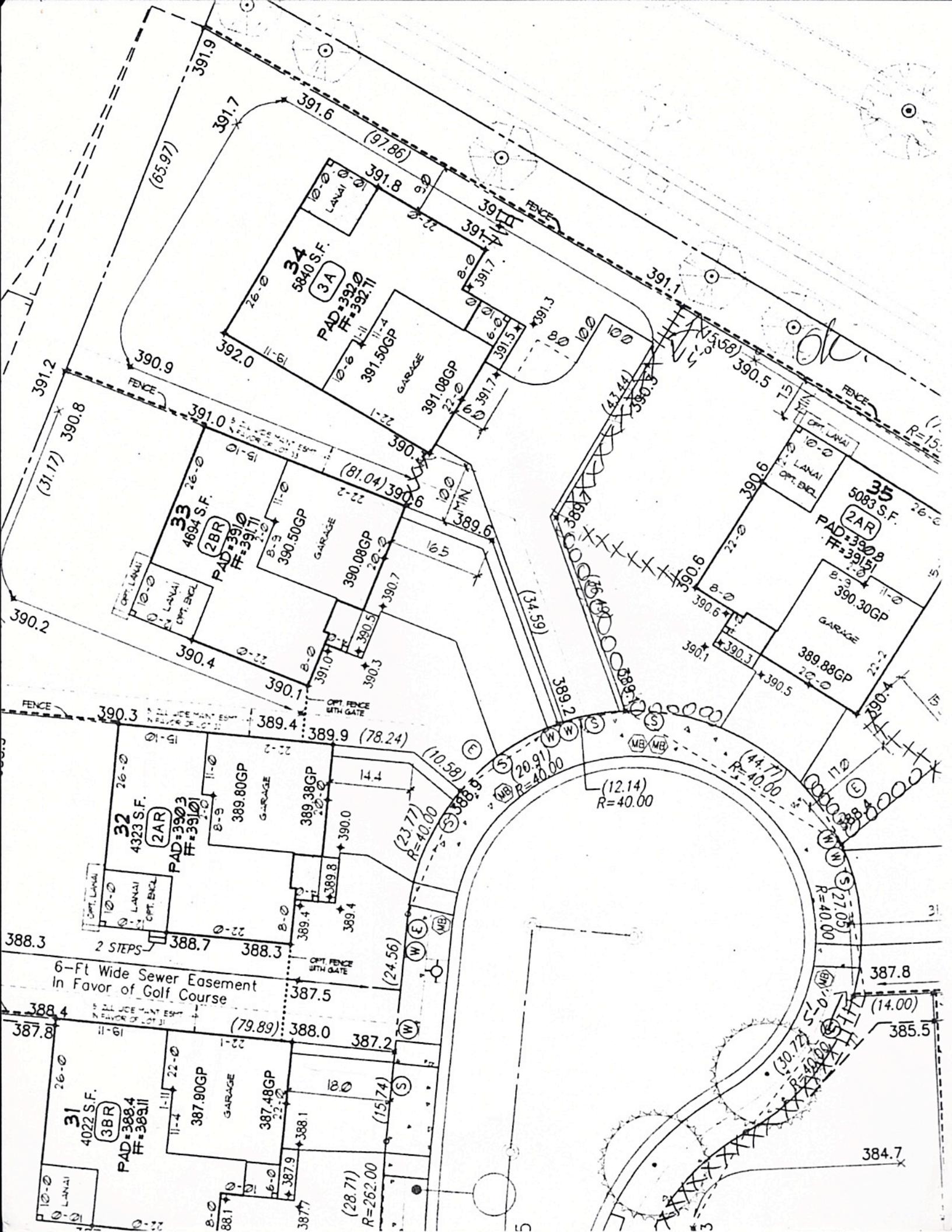
Lots 34, 36, 42, 47, 48, 54, 56, 57, 58, 64, 65, 80, 82, 97 and 180 have conditions that require specific drawings. See Lot specific sketch.

Legend:

XXXX = 6' side fence option

OOOO = 2'6" fence option

IIII = 5' fence option



391.2  
391.7  
391.9

(65.97)  
391.6  
391.8  
391.6  
(97.86)

391.8  
391.7  
391.7  
391.3

390.2  
390.8  
391.2

391.0  
390.9  
392.0  
391.5

391.7  
391.5  
391.5  
391.5

390.2  
390.4  
390.8

390.4  
390.7  
390.6  
390.6  
(31.17)

390.7  
390.6  
390.6  
390.6  
(81.04)

390.3  
390.3  
390.3

390.3  
390.4  
390.4  
390.4  
(37.59)

390.4  
390.4  
390.4  
390.4  
(13.44)

388.3  
388.3  
388.3

388.3  
388.3  
388.3  
388.3  
(23.77)

388.3  
388.3  
388.3  
388.3  
R=40.00

387.8  
387.8  
387.8

387.8  
387.8  
387.8  
387.8  
(20.91)

387.8  
387.8  
387.8  
387.8  
R=40.00

387.7  
387.7  
387.7

387.7  
387.7  
387.7  
387.7  
(12.14)

387.7  
387.7  
387.7  
387.7  
R=40.00

387.5  
387.5  
387.5

387.5  
387.5  
387.5  
387.5  
(44.77)

387.5  
387.5  
387.5  
387.5  
R=40.00

387.4  
387.4  
387.4

387.4  
387.4  
387.4  
387.4  
(17.2)

387.4  
387.4  
387.4  
387.4  
R=40.00

387.2  
387.2  
387.2

387.2  
387.2  
387.2  
387.2  
(14.00)

387.2  
387.2  
387.2  
387.2  
R=40.00

384.7  
384.7  
384.7

384.7  
384.7  
384.7  
384.7  
(14.00)

384.7  
384.7  
384.7  
384.7  
R=15.00

6-Ft Wide Sewer Easement  
In Favor of Golf Course

W

E

S

N

MB

MB

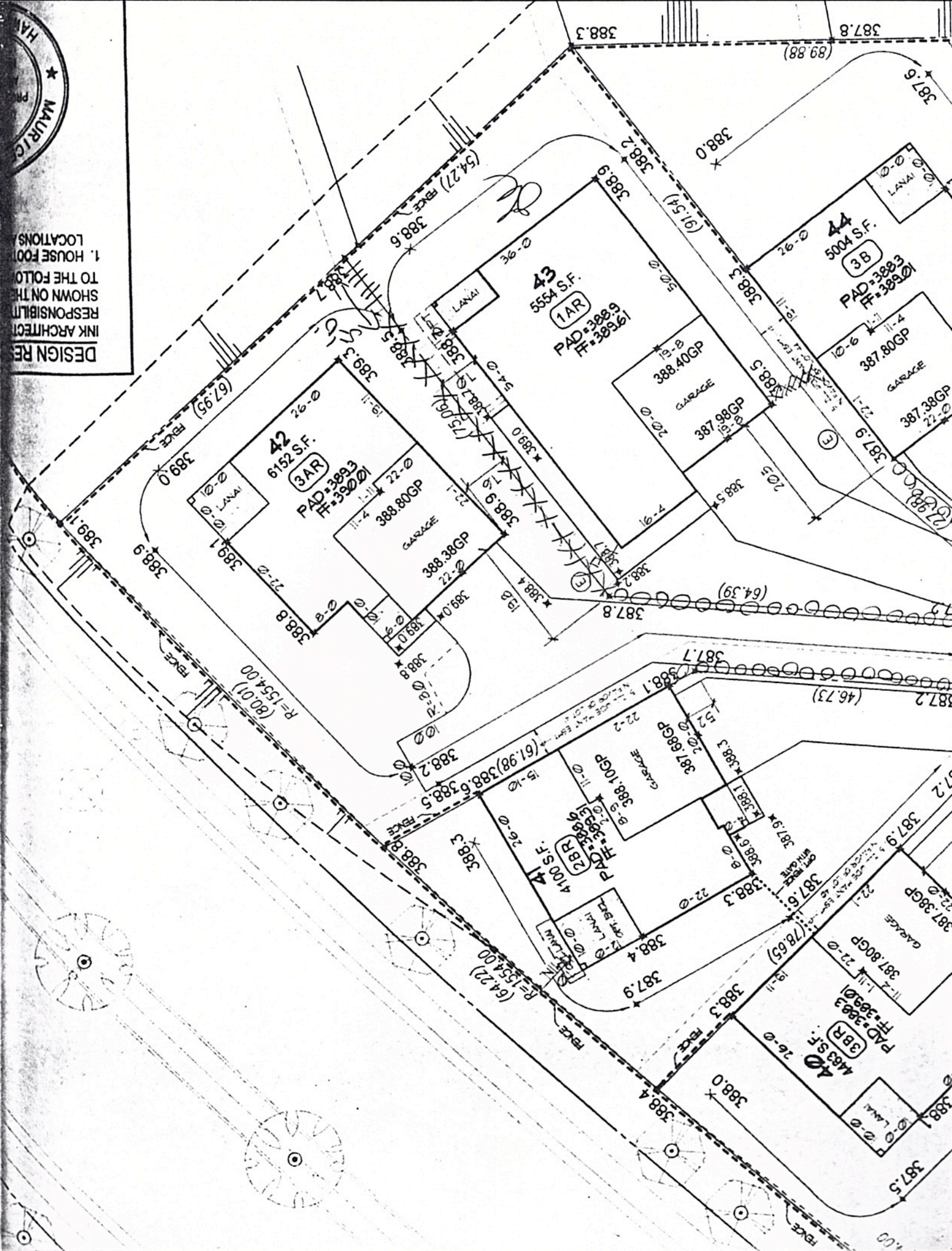
MB

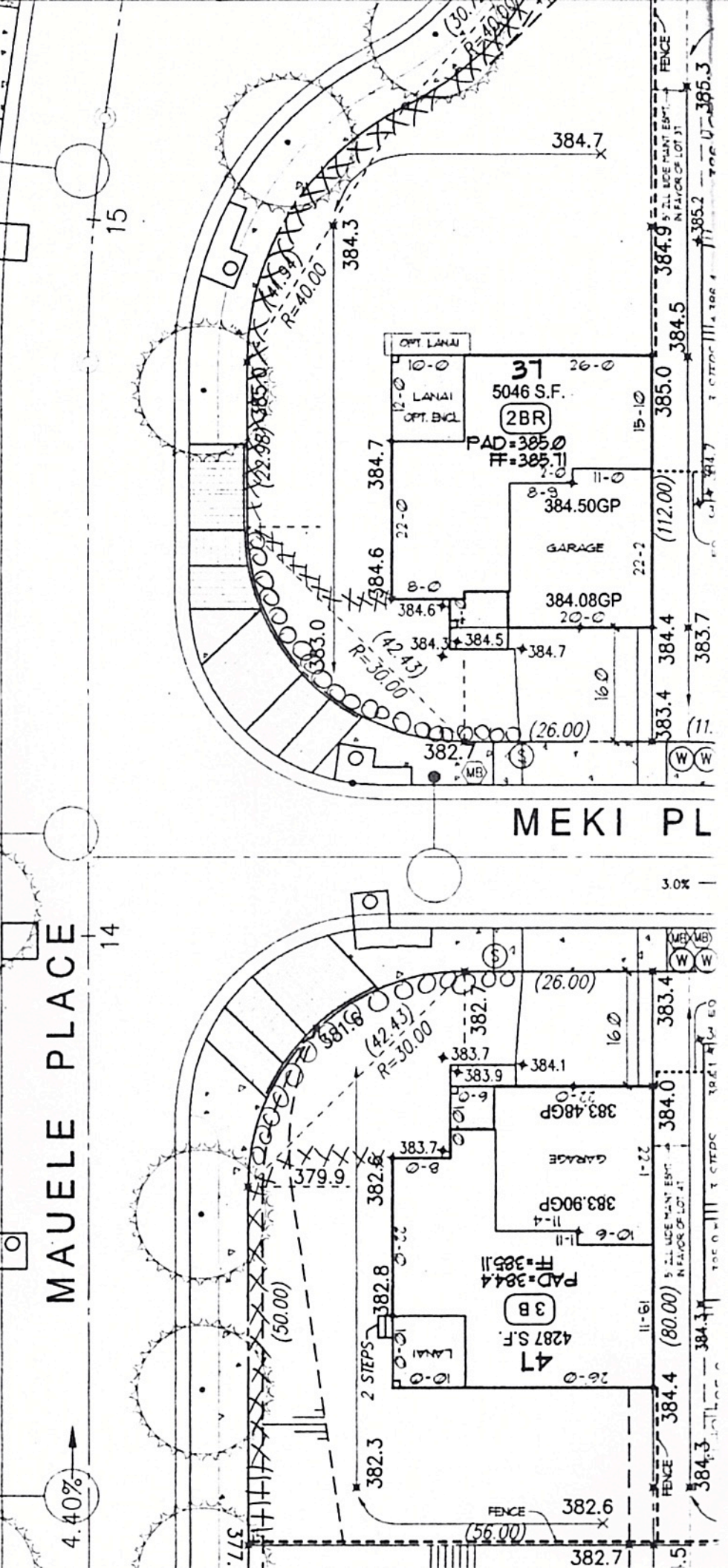
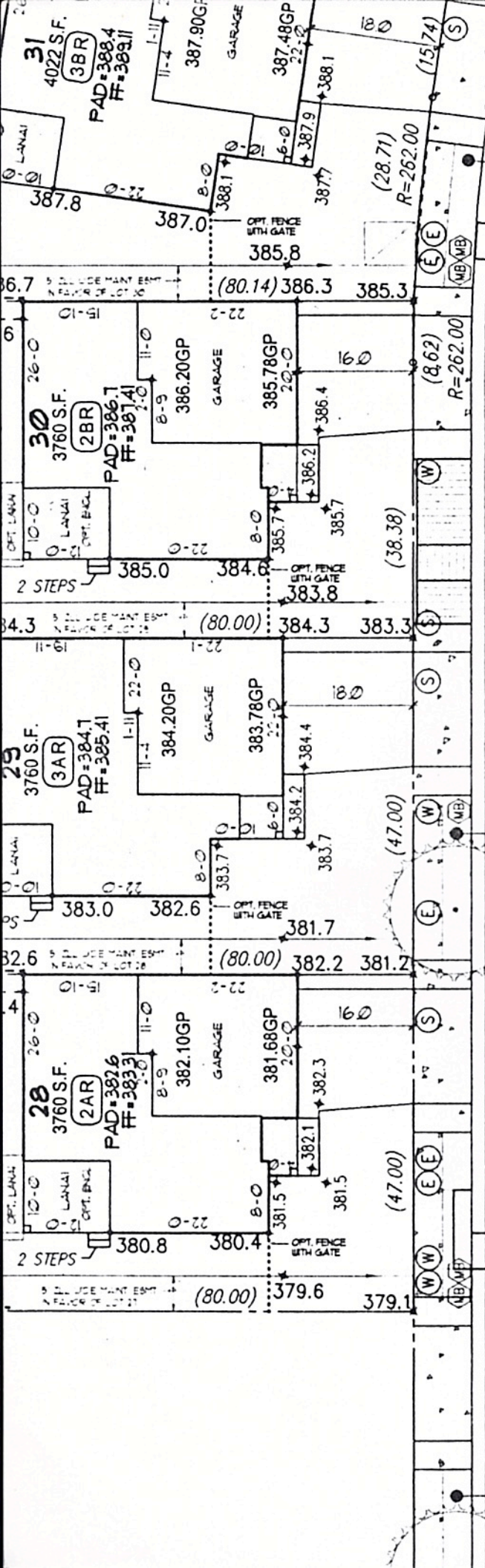
MB





DESIGN RESPONSIBILITY ARCHITECT SHOWN ON THE FOLIO TO THE HOUSE FOOT LOCATIONS





MAUELE PLACE

MEKI PL

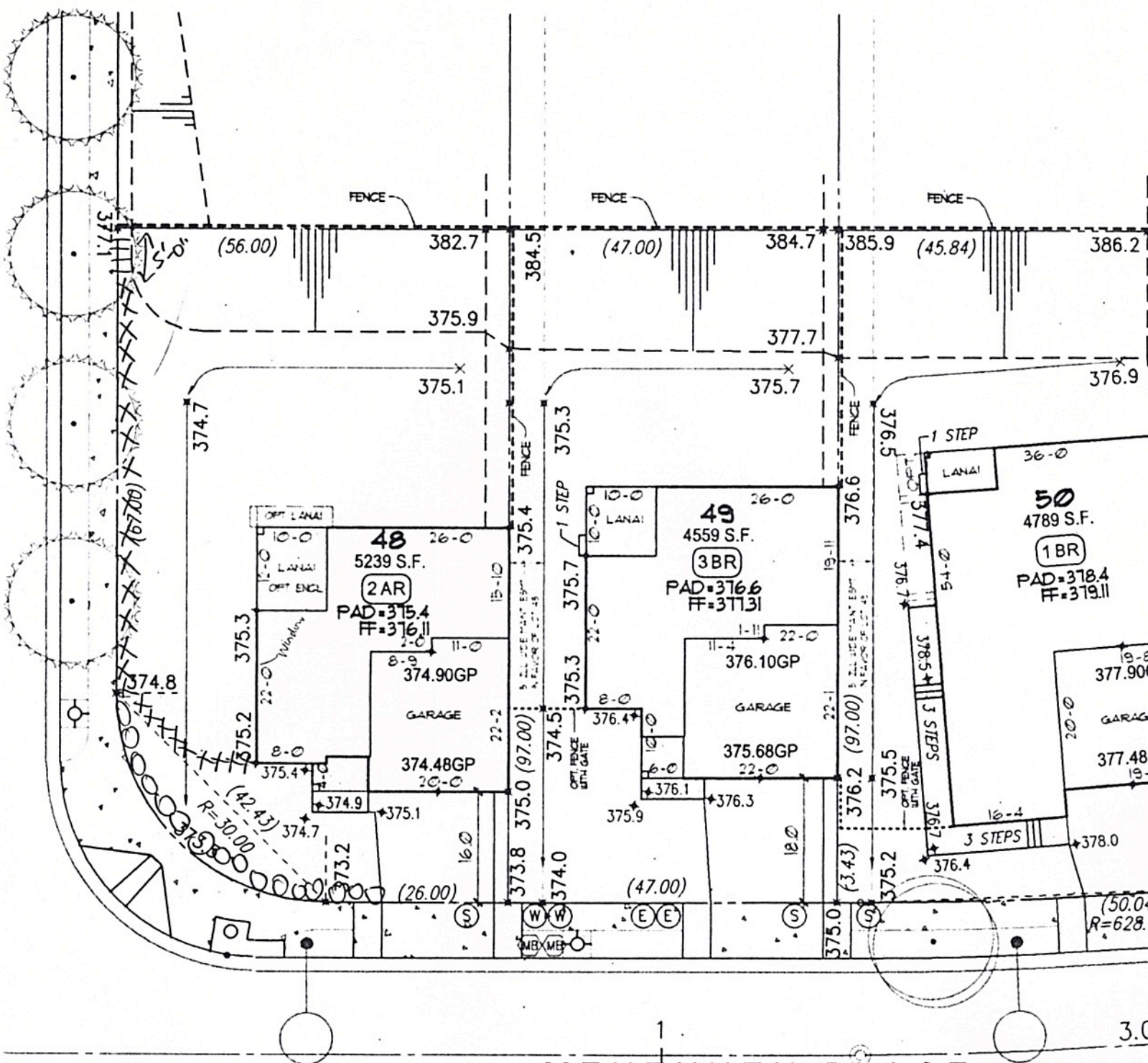
4.40%

14

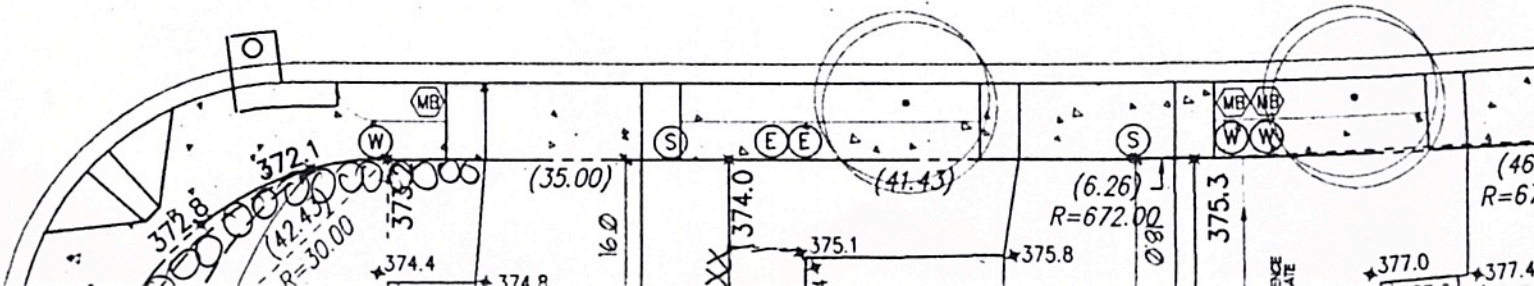
15

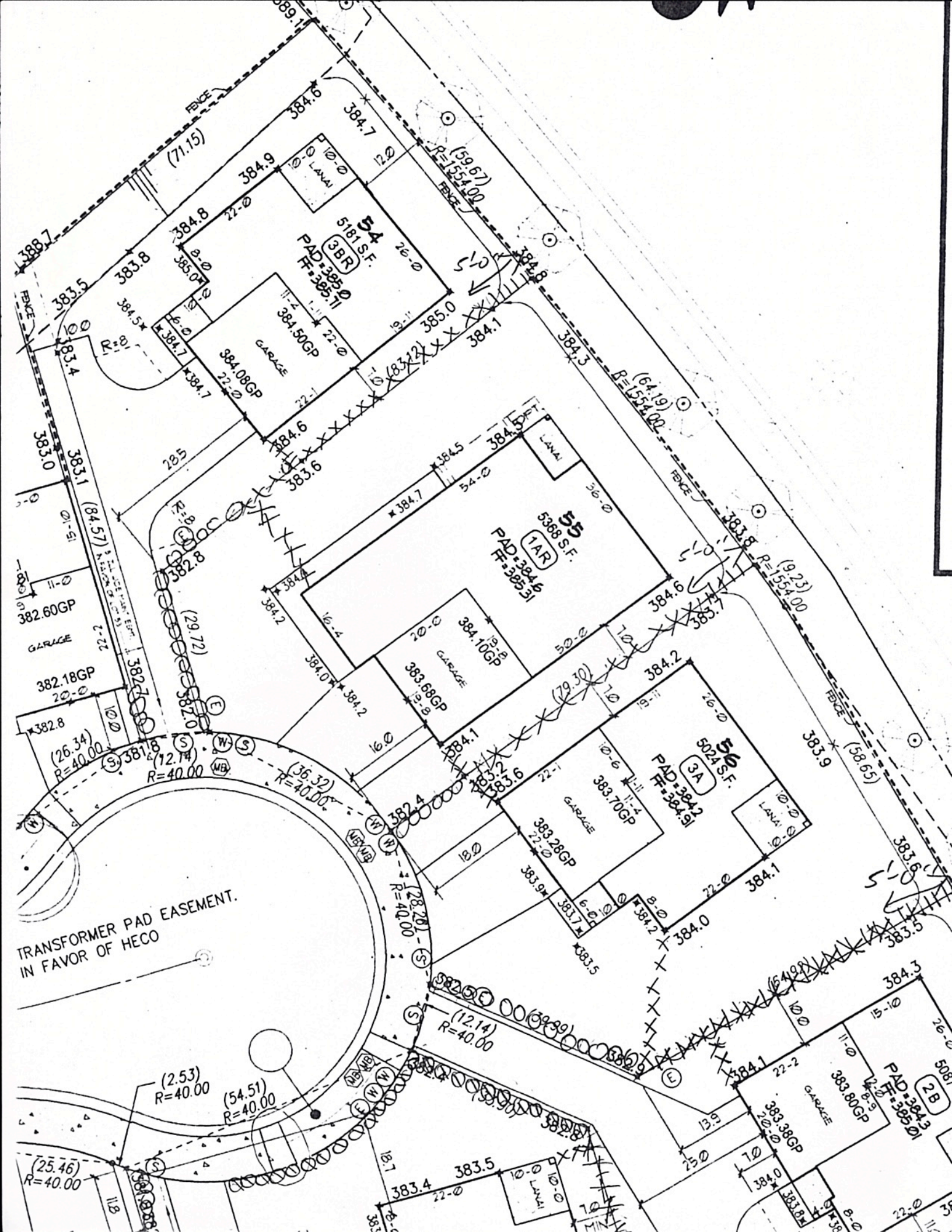
1.5

3.0%



MEHEUHEU PLACE

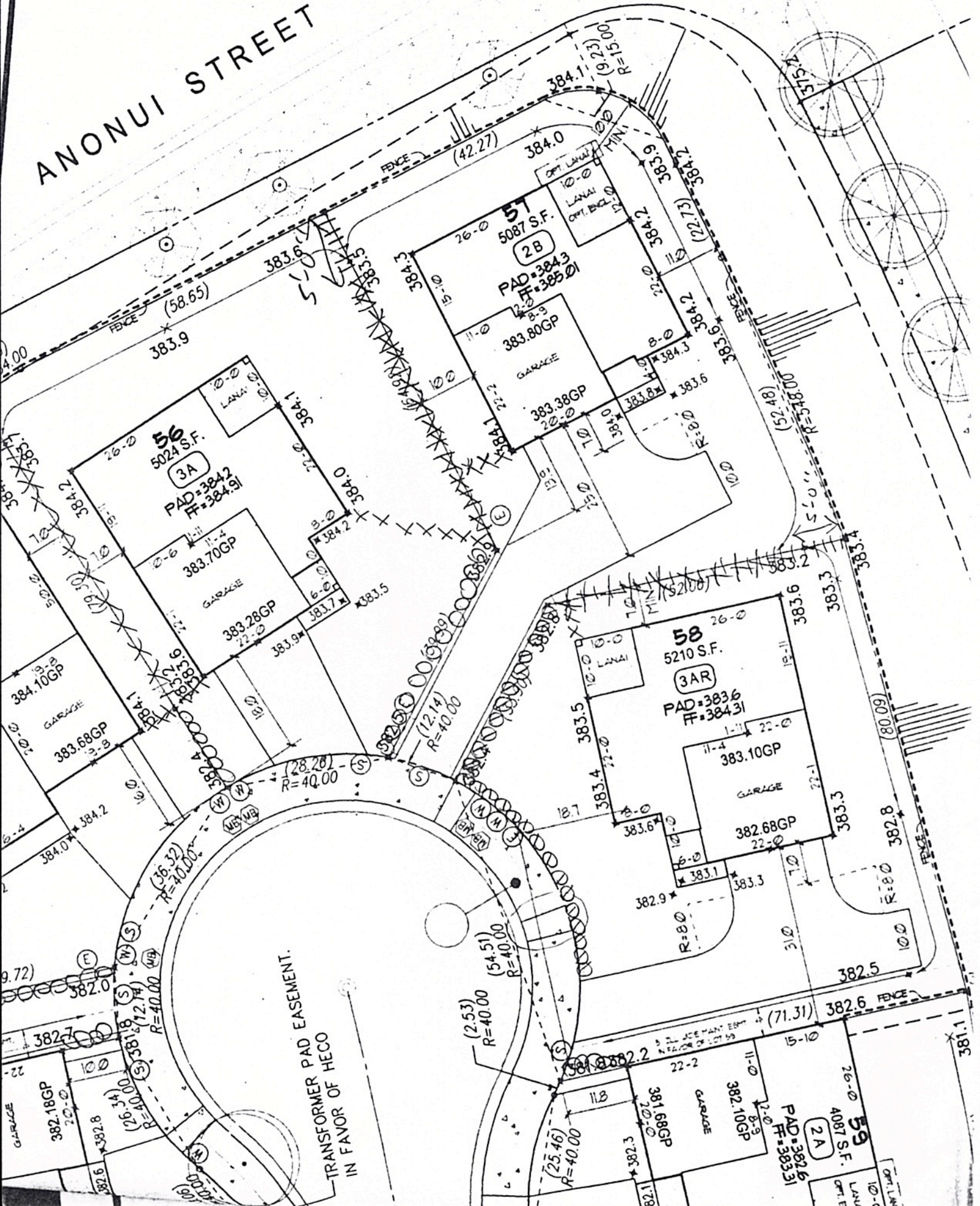




TRANSFORMER PAD EASEMENT.  
IN FAVOR OF HECO

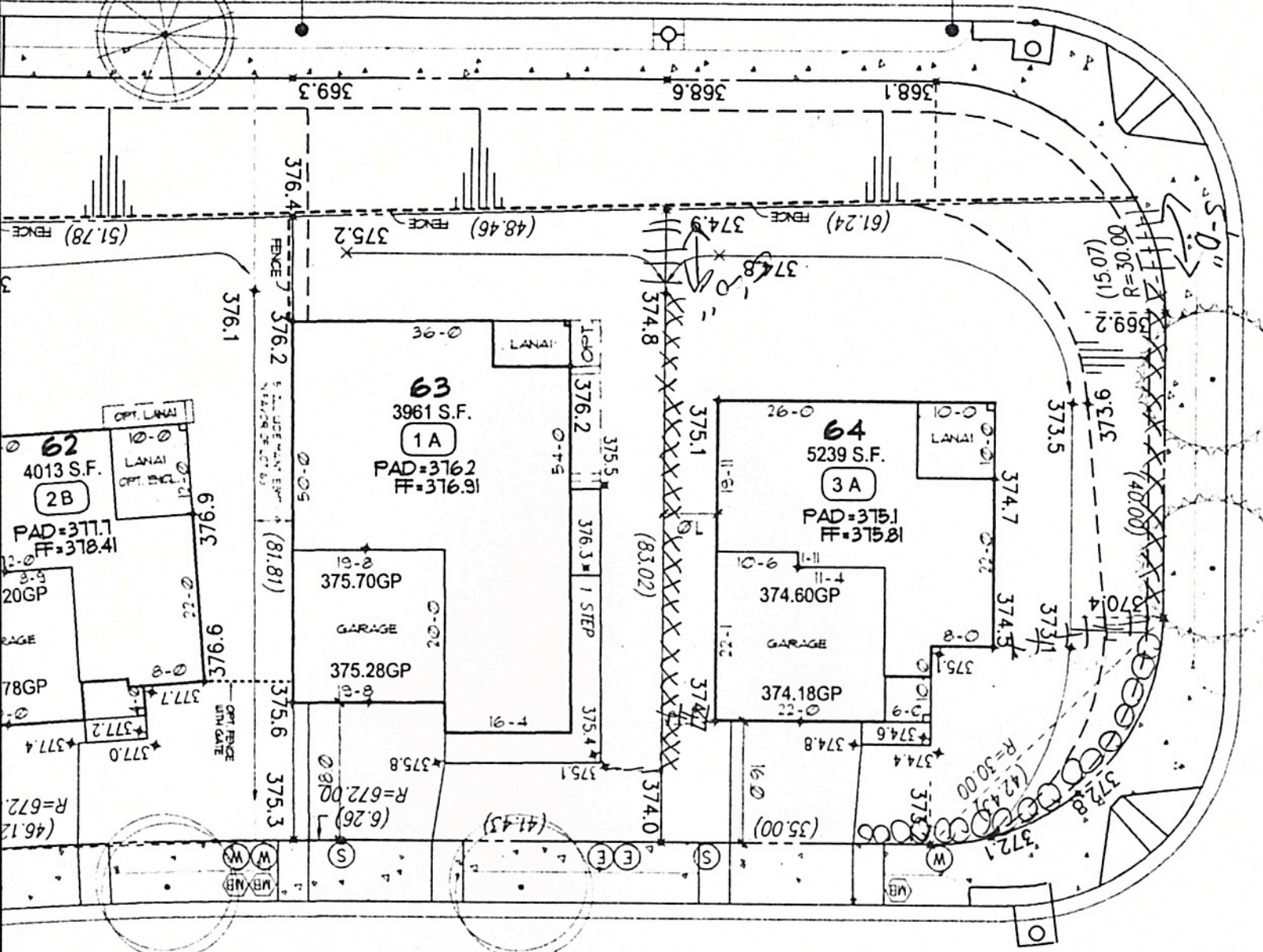


ANONU STREET



LANOIKI STR

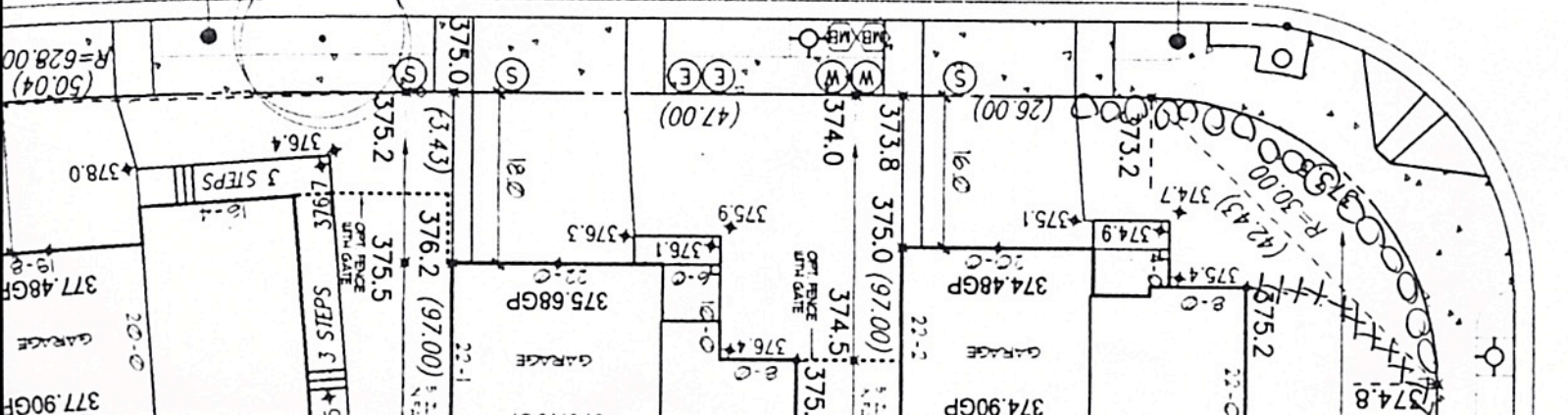
5



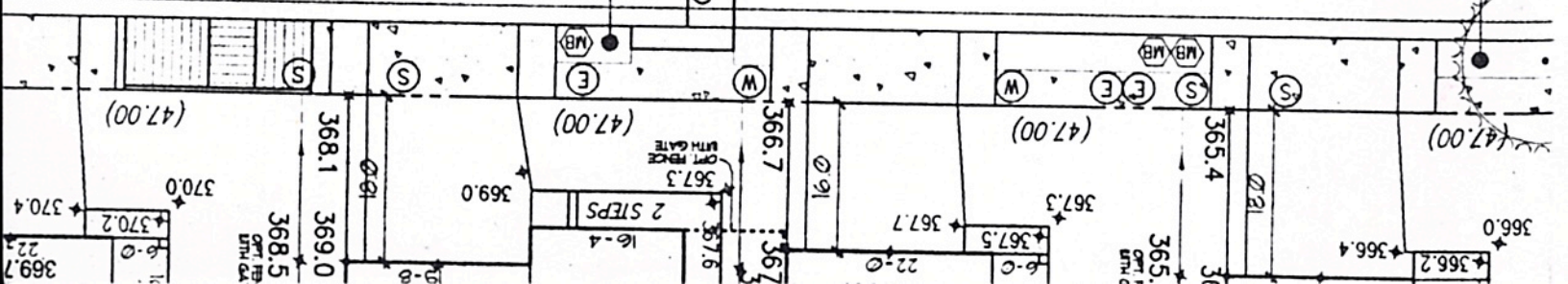
MEHEUHEU PLACE

3.0%

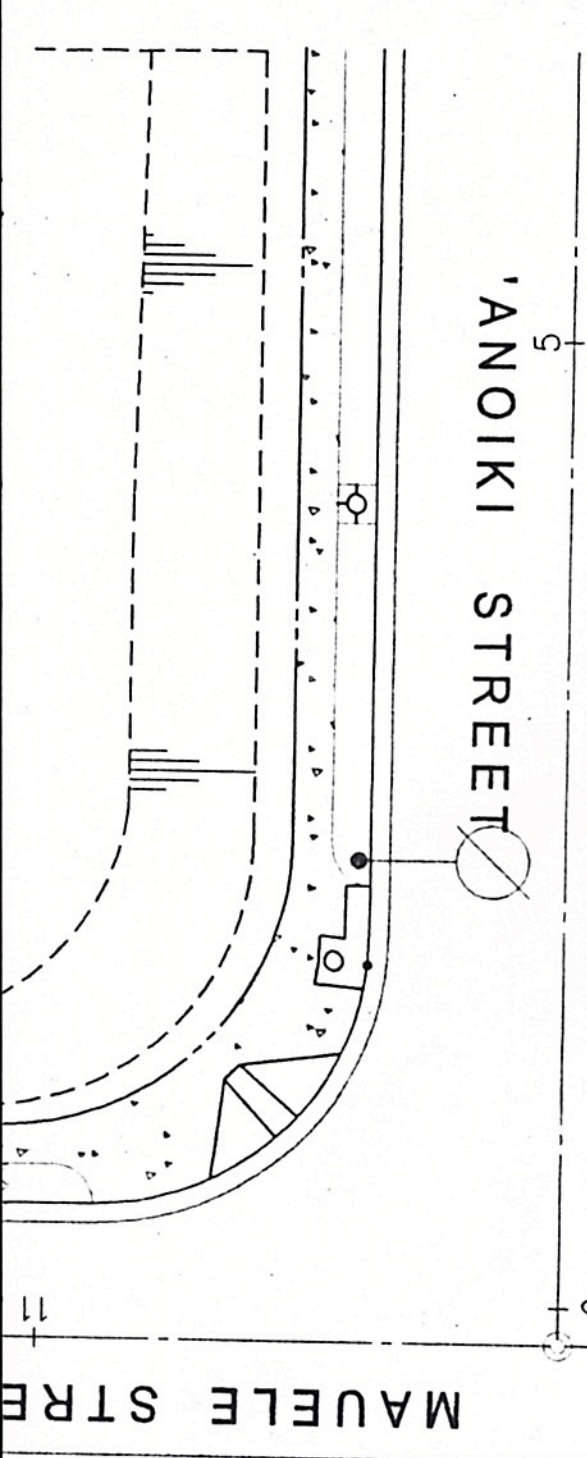
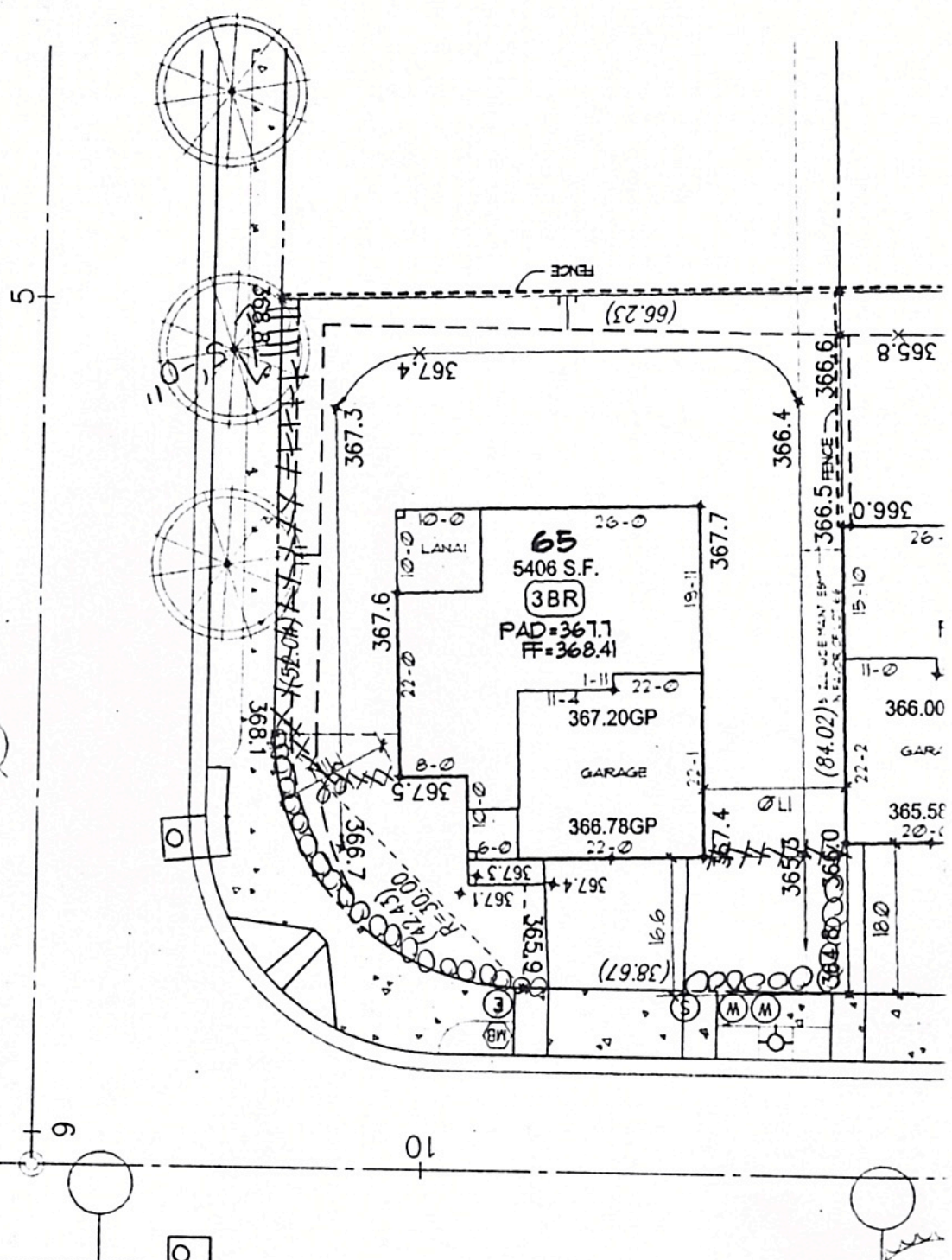
1



MAUELE STREET

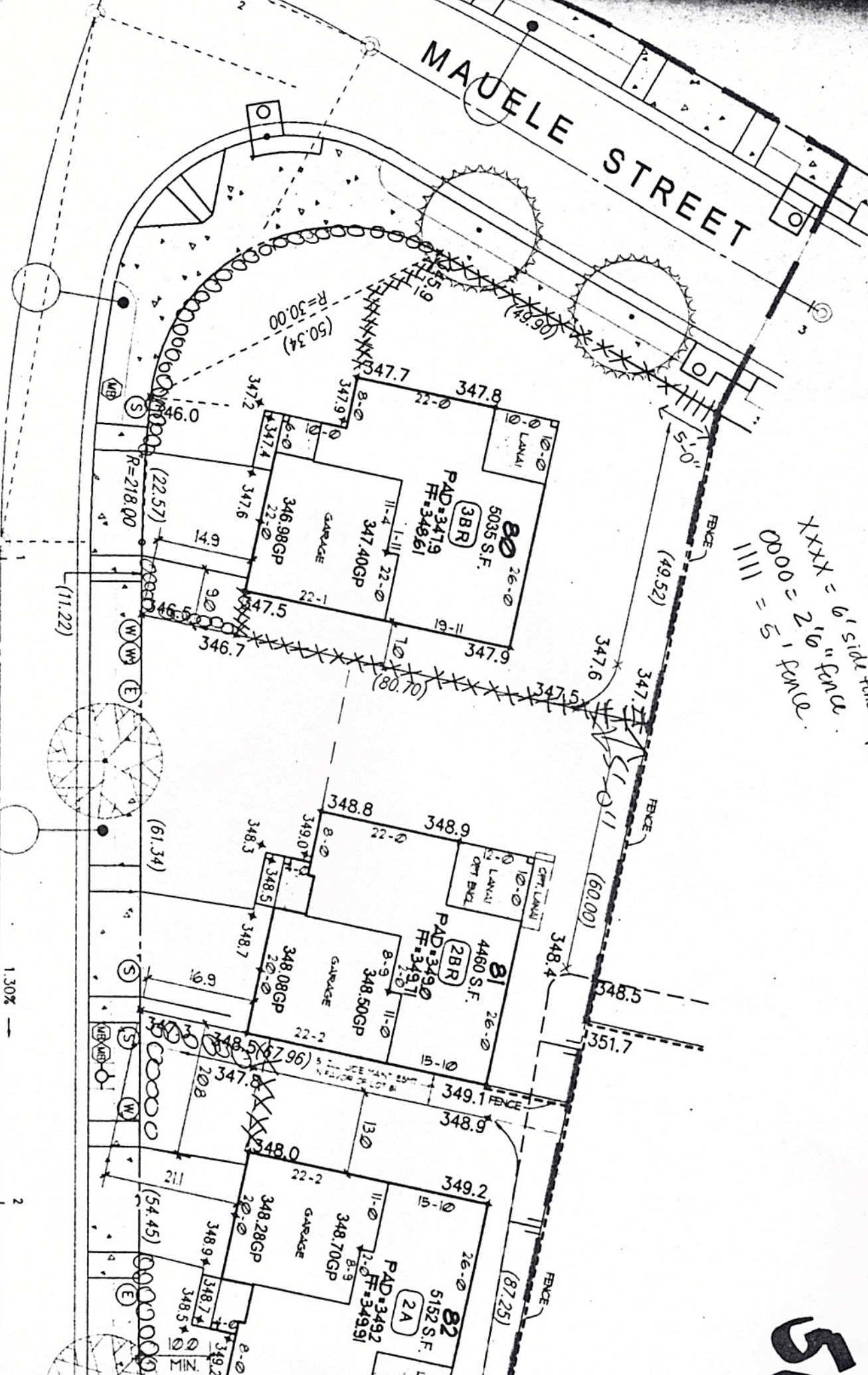


'ANOIKI STREET



MAUELE STREET

MAWAHO STREET



XXXXX = 6" solid fence of 1" oval  
 OOOO = 2" 10" fence = 5" fence

51

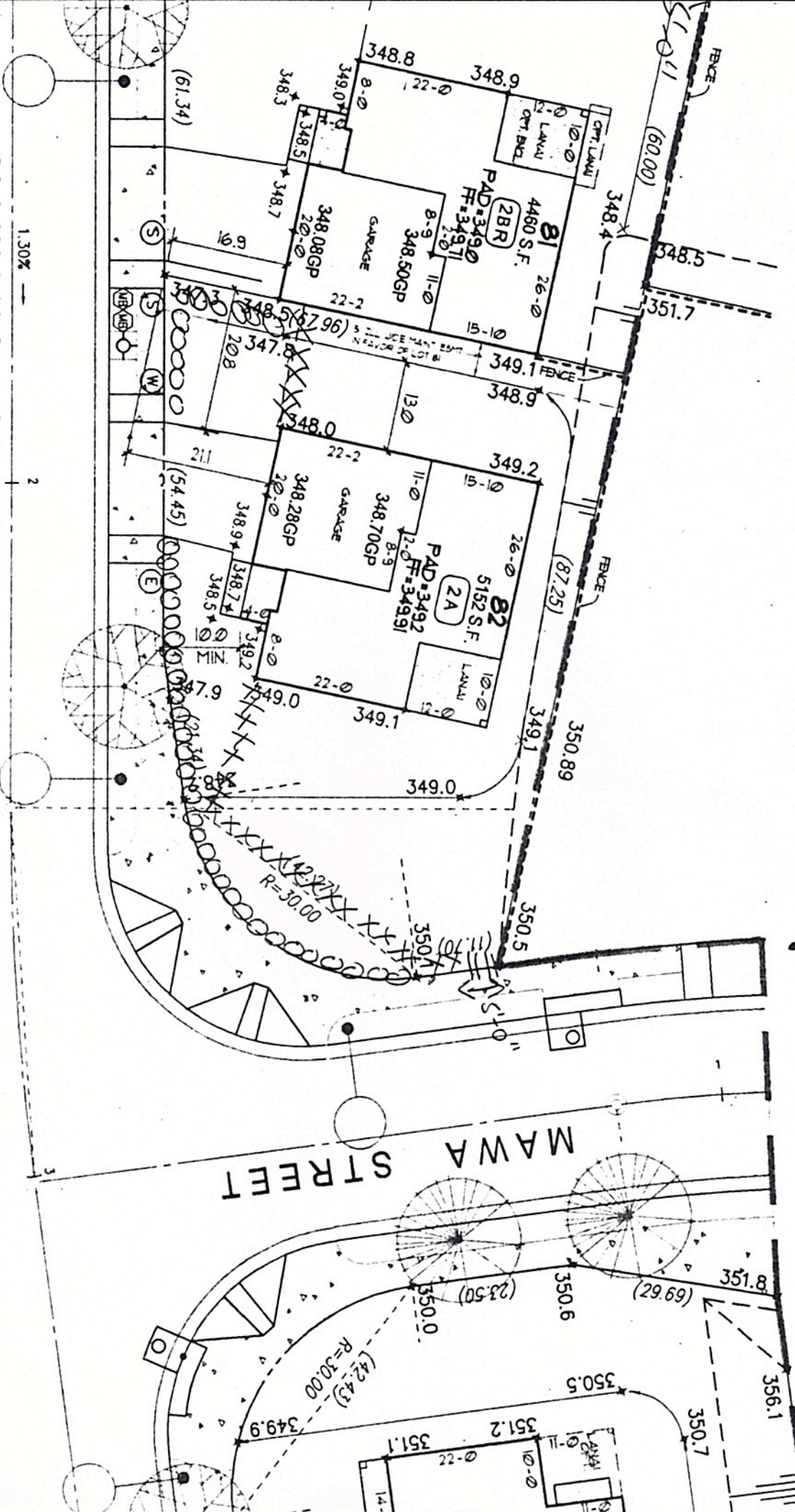
11/11/11

# MAWAHO STREET

1.30%

2

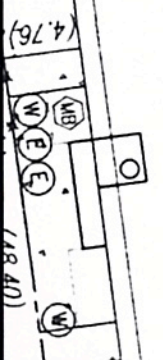
TRANSFORMER PAD EASEMENT.  
IN FAVOR OF HECCO



# 5A

# 5B

# MAWA STREET



TRUE NORTH

Scale: 1" = 20'

ET C8)

